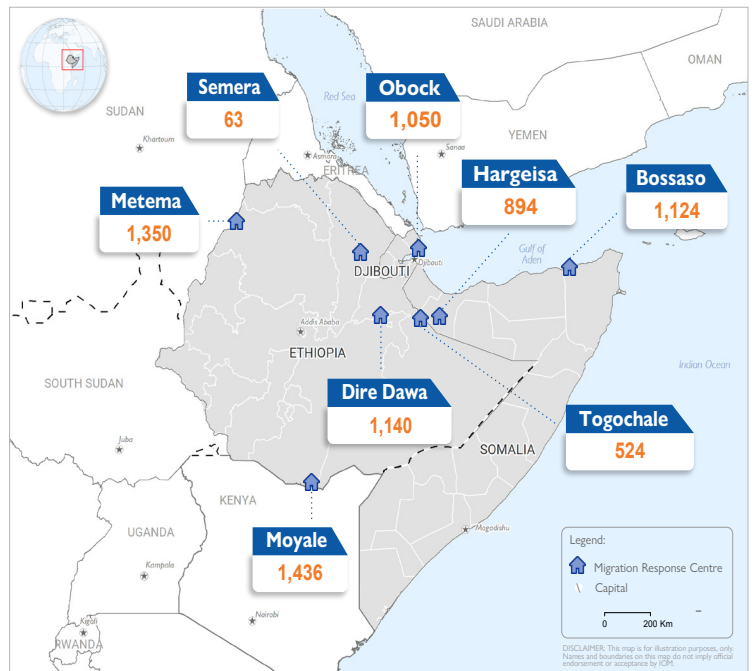


Background

Migration Response Centres (MRCs) are located along key migration corridors to identify migrants in vulnerable situations and provide them with critical, immediate and longer-term direct support. MRC services vary based on location and needs, and include food, temporary shelter and information and service referrals. Eight MRCs were operational in the region as of June 2022: Hargeisa and Bossaso since 2009, Obock since 2011, Semera and Metema since 2014, Dire Dawa and Togochale since 2019, and Moyale since 2021.

In the first half of 2022, more than 7,500 migrants sought assistance at MRCs, an increase of 73 per cent compared to the same period in 2021 (4,345). Following the declaration of a state of emergency due to the conflict in northern Ethiopia in November 2021, the IOM assisted voluntary return and reintegration (AVRR) programme was suspended as Ethiopia was unable to receive migrants amid insecurity. This service, a lifeline for stranded migrants, is expected to resume in July 2022. Additionally, severe drought conditions in the region pushed more people to migrate and seek assistance at MRCs.

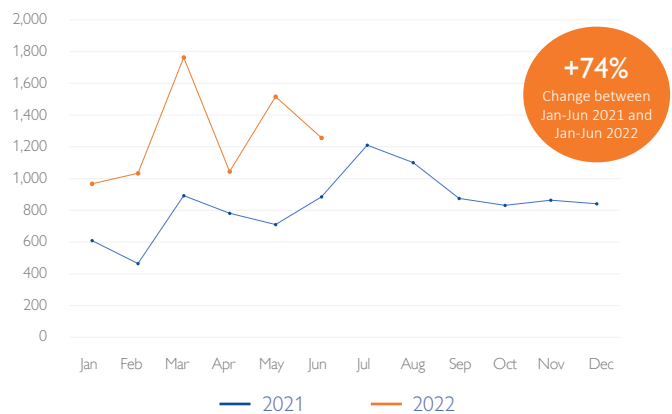
MRC Locations and Registrations



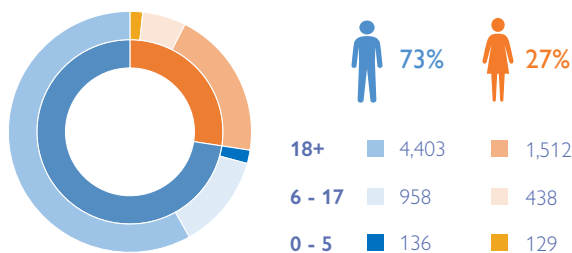
Numbers at a Glance

- 7,581** migrants registered across MRCs from January to June 2022
- 1,666** migrant children registered across MRCs from January to June 2022
- 59%** migrant children who were unaccompanied
- 20%** migrants who reported experiencing imprisonment or detention

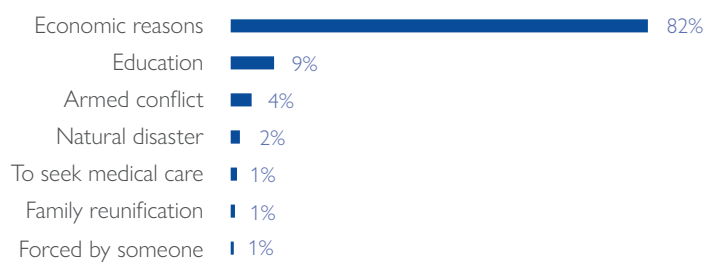
Monthly Registrations in 2021 and 2022



Migrant Sex and Age Breakdown



Most Reported Reasons for Migration¹



¹ Multiple selections allowed.