

REGIONAL OVERVIEW: SEPTEMBER 2021

A total of 875 migrants were registered at MRCs across the region in September, a 21% decrease compared to August. This brings the total registrations in 2021 to 7,531 migrants. The largest number of migrants were registered in Bossaso (228), followed by Hargeisa (188), Metema (134), Dire Dawa (119), Obock (98), Moyale (50), Semera (32) and Togochale (26).

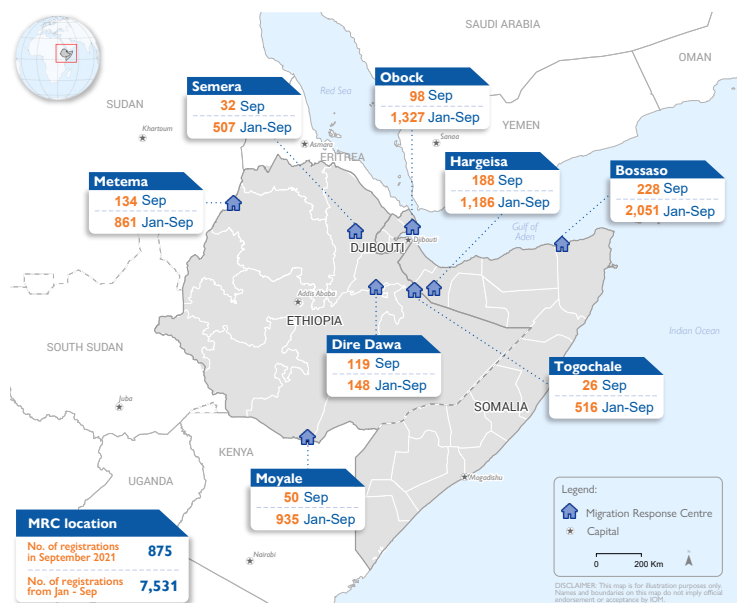
More male adults (44%) were registered in September than female adults (25%), while 31% of registrations were children. More than half of the registered migrants (54%) were between 18 and 29 years old. Child registrations increased by 14% between August (238) and September (272). Most registered children were between 15 and 17 years old (46%). While all the children registered at the MRCs in Hargeisa and Metema, and over half of the children registered at the MRC in Obock (63%) were accompanied, all the children registered in Bossaso, Dire Dawa, Semera and Moyale were unaccompanied. The MRC in Togochale did not register any children in September 2021.

Almost all registered migrants were Ethiopian nationals (99.3%), and the majority reported departing from the Oromia (55%), Southern Nations, Nationalities and Peoples' (20%) and Somali (8%) regions of Ethiopia. Some migrants were also returning from Yemen, in particular from Aden (4%), Al Bayda (1%), Sana'a (1%), Marib (1%) and Hadramaut (1%). About 30% of the registered migrants reported that they intended to continue their journey to Saudi Arabia, while 15% of migrants were heading to another Gulf country. All migrants registered at the MRC in Moyale were heading to South Africa. Overall, most migrants reported migrating for economic reasons (69%).



Risk communication and community engagement on COVID-19 prevention and irregular migration at the MRC in Moyale. © IOM 2021

MRC LOCATIONS AND REGISTRATIONS



Background and Methodology

Migration Response Centres (MRCs) are situated along key migration routes, where they fill critical gaps by providing direct assistance, including food and temporary shelter, information and service referrals to migrants on the move. Working collaboratively, MRCs bring together key partners to facilitate the identification of migrants in vulnerable situations, and ensure that they receive appropriate, immediate and longer-term support. Eight MRCs are currently operational in the Horn of Africa: Hargeisa and Bossaso since 2009, Obock since 2011, Semera and Metema since 2014, Dire Dawa and Togochale since the end of 2019, and Moyale since March 2021.

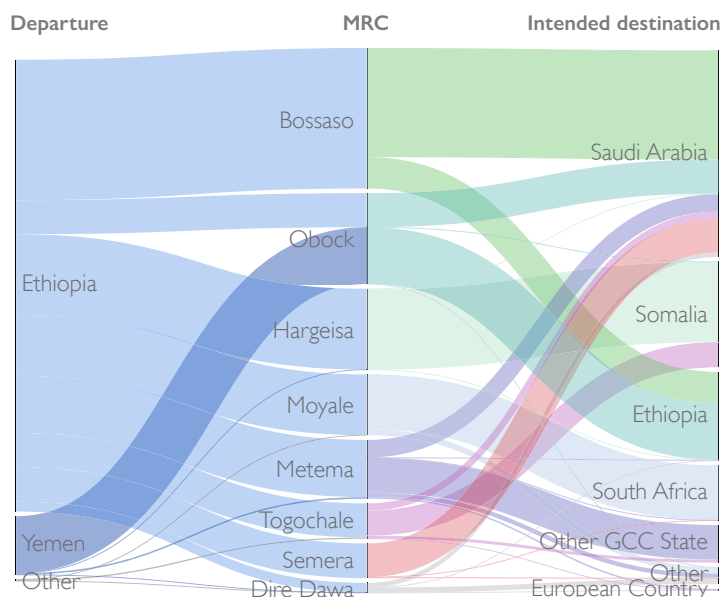
IOM established the MRC Regional Data Collection System in July 2016 to advance a standardized approach for collecting data and monitoring responses to mixed migration flows and informing evidence-based policy and programming in the region. In 2018, IOM revised the system to strengthen the provision of relevant and robust data. In 2020, a new software application, the MRC Information System (MRCIS), was developed to better address the data management needs of these centres.

This factsheet presents key findings, rather than the entire range of information gathered in the MRC questionnaire. Data is collected upon migrant registration at the MRCs by trained enumerators. Only the information of migrants that consent to their data being captured is collected. IOM does not share individual-level data. All data presented in this factsheet should be taken as indicative rather than representative and should not be used to generalise across the region.

MIGRANT JOURNEYS

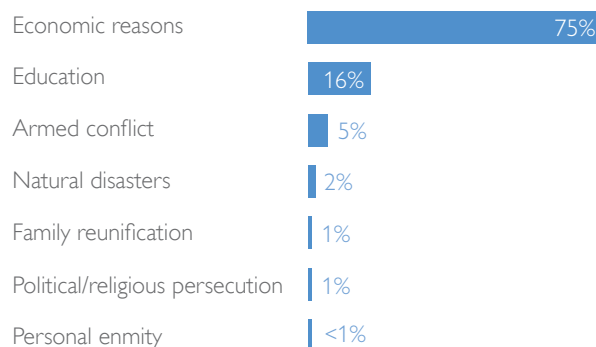


Travel History

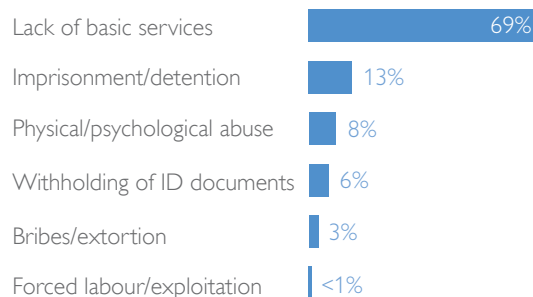


Top 4 Areas of Departure		
Ethiopia	Oromia	43%
Ethiopia	SNNP	23%
Ethiopia	Amhara	10%
Yemen	Aden	8%

Most Reported Reasons for Migration *



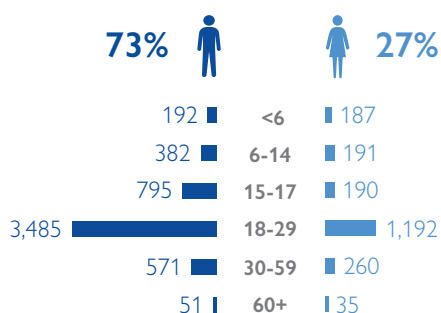
Most Reported Hardships During the Journey *



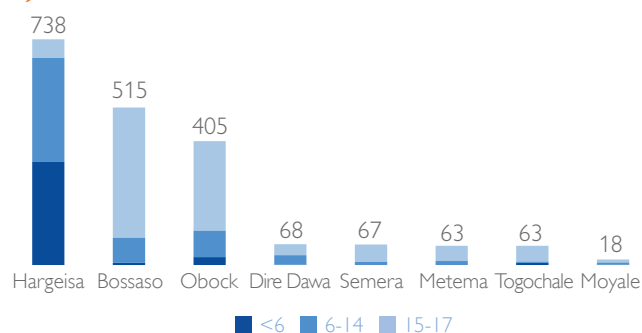
MIGRANT PROFILES AND VULNERABILITIES



7,531 Migrant Registrations



1,937 Child Migrant Registrations



Most Reported Vulnerabilities *



Note: The vulnerabilities are presented as a percentage of all reported vulnerabilities (4,938), and not of the total number of registered migrants.

* Multiple choices allowed.